

# Performance & Progress Report

Data for week ended Sunday, September 24, 2023



## Mission

Improving safety, permanency and well-being for all children in Polk, Highlands, and Hardee Counties

## Vision

To eliminate child abuse and neglect in Polk, Highlands, and Hardee Counties



# Community Based Care Lead Agency Scorecard

## FY 22-23 Year End Performance

CBC Lead Agency Scorecard Performance Table	Safety				Permanency				Well-Being			
Measures	1. Rate of Abuse per 100,000 days while in foster care.	2. Percent of children who are not neglected or abused during in-home services.	3. Children who are not neglected or abused after closure of services.	4. Children under supervision who are seen every 30 days.	5. Children exiting foster care to a permanent home within 12 months of entering care.	6. Children achieving permanency in 12 months for children in foster care 12 to 23 months.	7. Children who do not re-enter foster care within 12 months of moving to a permanent home.	8. Children's placement moves per 1,000 days in foster care.	9. Children in out-of-home care who have received medical services in the last 12 months.	10. Children in out-of-home care who received dental services within the last 7 months.	11. Young adults in foster care at age 18 that have completed or are enrolled in secondary education.	12. Children placed with all of their siblings who are in out of home care.
Standard	8.5	95.0%	95.0%	99.5%	40.5%	43.6%	91.7%	4.12	95.0%	95.0%	80.0%	65.0%
Reporting Period	04/01/22 to 03/31/23	04/01/22 to 03/31/23	10/01/21 to 09/30/22	07/01/22 to 06/30/23	07/01/21 to 06/30/22	7/1/22	07/01/20 to 06/30/21	07/01/22 to 06/30/23	6/30/23	6/30/23	07/01/22 to 06/30/23	6/30/23
Brevard Family Partnership	8.24	94.93%	95.63%	99.78%	28.95%	48.98%	91.81%	4.93	95.99%	91.20%	95.99%	59.57%
ChildNet-Broward	6.08	95.73%	95.55%	99.70%	32.61%	56.33%	83.26%	4.18	96.53%	90.67%	96.53%	65.31%
ChildNet-Palm Beach	7.88	96.89%	97.84%	99.67%	35.34%	61.06%	96.69%	4.06	96.32%	91.55%	96.32%	61.05%
Childrens Network of SW Florida	4.66	96.32%	96.39%	99.92%	34.51%	60.50%	91.36%	6.45	97.09%	96.71%	97.09%	56.46%
Childrens Network-Hillsborough	7.16	95.98%	95.61%	98.12%	28.48%	31.20%	91.80%	8.81	82.92%	60.97%	82.92%	57.22%
Citrus Health Network	3.93	96.54%	98.33%	99.60%	22.85%	42.92%	88.98%	3.46	98.02%	96.27%	98.02%	57.04%
Communities Connected for Kids	9.04	93.25%	95.67%	99.90%	38.89%	71.03%	89.66%	4.07	96.99%	95.73%	96.99%	70.73%
Community Partnership for Children	7.17	96.11%	97.18%	99.70%	25.75%	56.66%	90.44%	4.03	88.02%	69.72%	88.02%	66.10%
Embrace Families	8.07	94.84%	98.19%	98.51%	24.51%	43.49%	92.19%	7.11	82.28%	65.13%	82.28%	56.16%
Family Integrity Program	0.00	95.36%	97.69%	99.73%	29.41%	80.95%	72.97%	4.67	98.31%	97.73%	98.31%	58.33%
Family Support Services of North Fla	5.75	95.43%	97.22%	99.64%	27.46%	57.84%	89.06%	4.97	94.82%	84.27%	94.82%	51.75%
FSS Suncoast	6.72	95.88%	95.88%	98.30%	26.47%	38.51%	88.83%	7.20	78.88%	43.33%	78.88%	58.56%
Heartland for Children	6.52	94.60%	98.18%	99.82%	28.82%	42.60%	92.27%	4.16	97.63%	94.00%	97.63%	56.15%
Kids Central, Inc.	2.57	95.48%	97.32%	97.93%	28.49%	33.85%	88.74%	7.13	76.18%	61.60%	76.18%	63.99%
Kids First of Florida, Inc.	4.73	99.61%	96.08%	99.85%	30.77%	37.65%	87.76%	5.48	97.96%	86.43%	97.96%	56.52%
NWF Health Network - East	6.13	97.52%	97.28%	99.59%	31.97%	63.81%	96.09%	5.93	96.88%	88.51%	96.88%	56.19%
NWF Health Network - West	10.23	94.49%	96.78%	99.69%	25.49%	45.01%	94.81%	7.29	90.36%	79.48%	90.36%	59.15%
Partnership for Strong Families	8.46	97.43%	96.73%	99.66%	25.19%	40.70%	94.55%	7.72	68.82%	46.23%	68.82%	53.00%
Safe Children Coalition	5.67	97.21%	95.64%	99.34%	33.67%	53.59%	92.11%	4.76	96.57%	90.04%	96.57%	62.98%
Statewide	6.57	95.88%	96.76%	98.87%	29.15%	46.17%	90.80%	5.85	88.30%	74.96%	88.30%	58.89%
Red Zone	8.85	92.9%	92.9%	98.9%	36.3%	39.2%	90.8%	4.54	89.9%	89.9%	69.9%	60.0%



# Scorecard Measure 4 – Children Seen Every Thirty Days

SM04 - Percent of children under supervision who are required to be seen every 30 days – Target = 99.5%

Current Month

Scorecard Measure #4 - Children Under Supervision Who Are Seen Every Thirty Days		
September 2023 as of 09/24/23		
Report Date Range: 09/01/23 to 09/30/23		
Agency	# of Children <u>Not</u> seen in 30 days	% of Children seen timely
CHS	4	99.96% ★
LSF	12	99.51% ★
OHU	11	99.80% ★
NTF	0	100.00% ★
HFC	27	99.77% ★
<b>Statewide</b>		<b>99.24%</b>
<i>Source Monthly: "Children Under Supervision Who Are Seen Every Thirty Days - Report #1144"</i>		
Target of 99.5%		

Prior Month End

Scorecard Measure #4 - Children Under Supervision Who Are Seen Every Thirty Days		
August 2023 as of 09/10/23		
Report Date Range: 08/01/23 to 08/31/23		
Agency	# of Children <u>Not</u> seen in 30 days	% of Children seen timely
CHS	8	99.75% ★
LSF	0	100.00% ★
OHU	8	99.83% ★
HFC	16	99.85% ★
<b>Statewide</b>		<b>99.21%</b>
<i>Source Monthly: "Children Under Supervision Who Are Seen Every Thirty Days - Report #1144"</i>		
Target of 99.5%		

# Monthly Birth Parent Contacts

Target = 70% Mothers and 50% Fathers - seen monthly

Current Month

Birth Parent Contact Completed						
September 2023 as of 09/24/23 (Point in Time)						
AGENCY	# Moms Required	# Moms Completed	Mom % Completed	# Dads Required	# Dads Completed	Dad % Completed
CHS	206	67	32.5%	129	24	18.6%
LSF	232	130	56.0%	172	78	45.3%
OHU	132	47	35.6%	97	17	17.5%
<b>TOTAL</b>	<b>570</b>	<b>244</b>	<b>42.8%</b>	<b>398</b>	<b>119</b>	<b>29.9%</b>

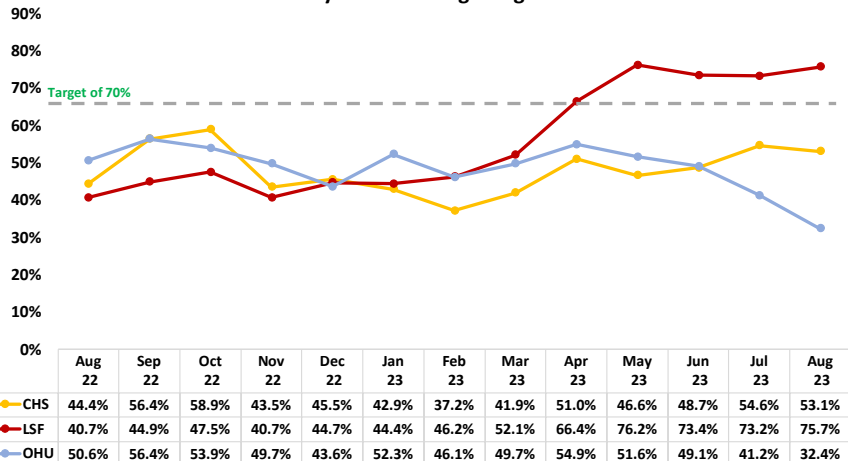
Criteria: Children in Out-of-Home Care w/goal of reunification  
Source: Daily Ad Hoc Birth Parent Contact FSN

- **Mother Contact**, Target is 70% or above
- **Father Contact**, Target is 50% or above

## Mother Contact

Green: 70% or above, Yellow: 69% - 60%, Red: 59% or less

Percent of Mother's Seen in the Month, Required to be Seen  
Monthly Trend Through August 2023



## CMO Referrals for Fatherhood Engagement

Referrals to Neighbor to Families  
Data as of September 24, 2023



Month of Referral	CHS	LSF	OHU	Grand Total
May		3	8	11
Jun		1	2	3
Jul	9	1	3	13
Aug	9	3	1	13
Sep	3	8	1	12
<b>Grand Total</b>	<b>18</b>	<b>8</b>	<b>14</b>	<b>52</b>

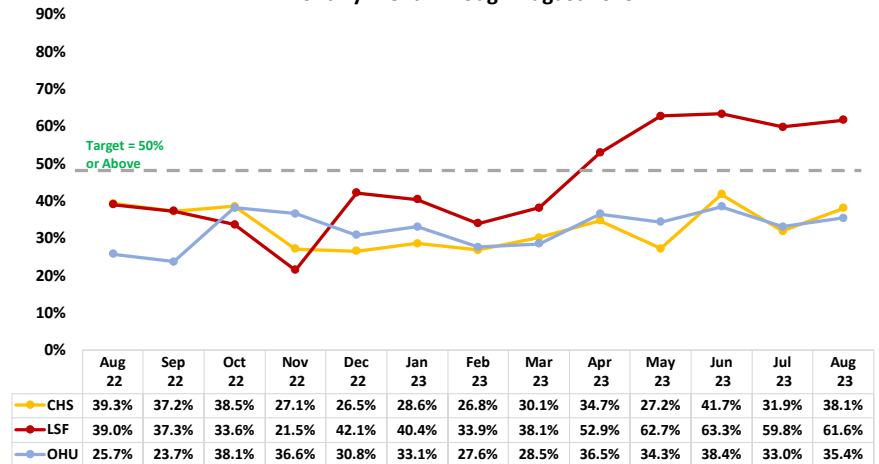
\*Partial Month

Source: Neighbor to Families Manual Fatherhood Tracking Sheet

## Father Contact

Green: 50% or above, Yellow: 49% - 40%, Red: 39% or less

Percent of Father Seen in the Month, Required to be Seen  
Monthly Trend Through August 2023



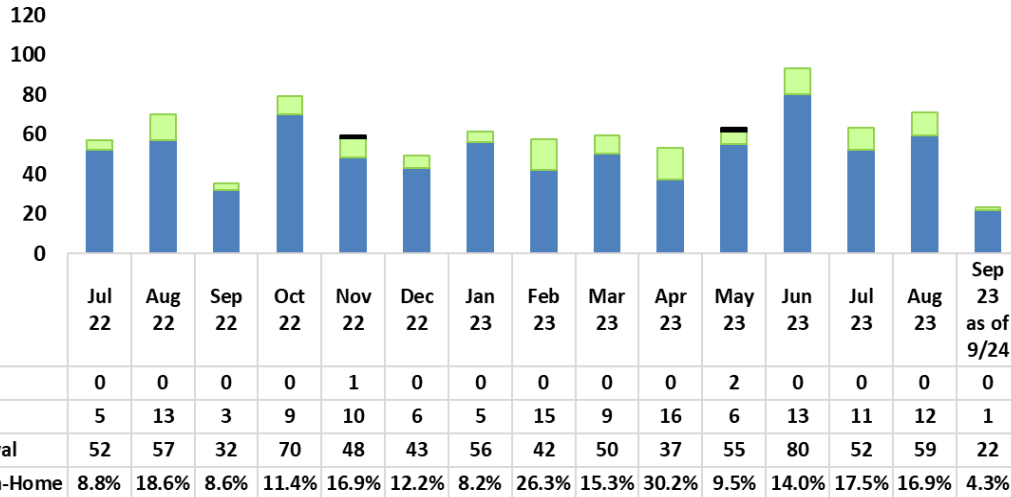
# Case Transfer Staffing Data

Case Transfer Data For Fiscal Year 2023/24 - Data as of 09/26/23

	JUL	AUG	SEPT	23-24 Totals	22-23 Totals	21-22 Totals	20-21 Totals	19-20 Totals	18-19 Totals	17-18 Totals	16-17 Totals	15-16 Totals	14-15 Totals	13/14 Totals	12/13 Totals	11/12 Totals	10/11 Totals	09/10 Totals	
<b>Number of Children</b>																			
CHS	24	33	9	66	347	358	426	414	460	349	416	391	259	304	274	352	480	341	
LSF	22	32	11	65	401	355	443	439	482	349	442	403	251	303	274	360	489	344	
NTF	0	0	23	23	0	0	0	0	0	0	0	0	0	0	0	0	0	0	
OHU Polk	10	4	2	16	141	147	162	177	196	253	426	388	253	312	285	351	488	349	
One Hope	34	52	23	109	439	503	550	518	548	527	586	358	460	380	387	390	301	194	
<b>Total</b>	<b>90</b>	<b>121</b>	<b>68</b>	<b>279</b>	<b>1328</b>	<b>1363</b>	<b>1581</b>	<b>1548</b>	<b>1686</b>	<b>1478</b>	<b>1870</b>	<b>1540</b>	<b>1223</b>	<b>1299</b>	<b>1220</b>	<b>1453</b>	<b>1758</b>	<b>1228</b>	
<b>Out of Home Care</b>																			
CHS	11	30	9	50	229	200	220	240	262	226	253	230	176	153	143	175	217	164	
LSF	13	23	7	43	237	188	267	253	291	218	259	218	165	177	154	191	216	165	
OHU Polk	3	1	2	6	98	103	75	91	116	164	265	235	175	125	136	209	218	168	
One Hope	16	18	7	41	102	113	150	106	125	133	136	71	130	48	68	99	110	64	
<b>Total</b>	<b>43</b>	<b>72</b>	<b>25</b>	<b>140</b>	<b>666</b>	<b>604</b>	<b>712</b>	<b>690</b>	<b>794</b>	<b>741</b>	<b>913</b>	<b>754</b>	<b>646</b>	<b>503</b>	<b>501</b>	<b>674</b>	<b>761</b>	<b>561</b>	
<b>IN - HOME JUDICIAL</b>																			
CHS	3	0	0	3	10	4	17	38	48	35	27	30	41	68	89	97	116	72	
LSF	2	1	0	3	10	16	23	40	37	27	24	37	23	52	72	111	110	89	
OHU Polk	0	0	0	0	0	2	10	40	20	20	29	11	12	63	90	92	119	81	
One Hope	0	4	1	5	6	6	4	8	11	24	22	8	19	13	16	29	32	59	
<b>Total</b>	<b>5</b>	<b>5</b>	<b>1</b>	<b>11</b>	<b>27</b>	<b>28</b>	<b>54</b>	<b>126</b>	<b>116</b>	<b>106</b>	<b>102</b>	<b>86</b>	<b>95</b>	<b>196</b>	<b>267</b>	<b>329</b>	<b>377</b>	<b>301</b>	

JUL	AUG	SEPT	23-24 Totals	22-23 Totals	21-22 Totals	20-21 Totals	19-20 Totals	18-19 Totals	17-18 Totals	16-17 Totals	15-16 Totals	14-15 Totals	13/14 Totals	12/13 Totals	11/12 Totals	10/11 Totals	09/10 Totals
<b>NON-JUDICIAL IN HOME SERVICES</b>																	
10	2	0	12	85	116	136	90	110	48	102	83	13	35	2	14	51	1
6	8	2	16	98	95	97	112	93	66	119	82	16	34	3	9	50	1
0	0	23	23	0	0	0	0	0	0	0	0	0	0	0	0	0	0
5	2	0	7	25	31	65	31	52	44	113	89	44	73	13	10	46	0
0	0	0	0	53	35	45	32	41	49	67	52	23	17	0	14	31	0
21	12	25	58	261	277	343	265	296	207	401	306	96	159	18	47	178	2
<b>OCS / ICPC Courtesy Supervision</b>																	
0	0	0	0	0	0	0	0	0	2	1	28	0	2	0	4	44	41
0	0	0	0	0	0	2	0	0	0	2	40	1	1	0	2	43	46
0	0	0	0	0	0	0	0	0	0	1	29	0	0	1	1	44	47
16	30	15	61	270	338	351	360	363	313	355	217	277	291	286	237	110	38
16	30	15	61	270	338	353	360	363	315	359	314	278	294	287	244	241	172
<b>Reinstatement of Protective Services Supervision (Notice of Hearings)</b>																	
0	0	0	0	17	17	26	8	12	17	17	7	9	19	26	32	35	43
0	0	0	0	35	46	36	10	41	18	20	16	17	29	24	13	48	34
0	0	0	0	1	2	7	8	2	10	13	9	14	30	15	16	31	39
0	0	0	0	4	0	0	0	7	2	4	9	10	6	8	8	14	22
0	0	0	0	57	65	69	26	62	47	54	41	50	84	73	69	128	138

**Heartland for Children**  
**Number of Children Entering OHC by Type of Entry**  
**Monthly Trend Through September 24, 2023**



Source: Children Entering and Exiting Foster Care On-Demand Listing - OCWDRU Report #1182, Excluding aged 18+ and IL initial placements



# Children Re-Entering Out-of-Home Care

Number of Children in a Recent Removal Episode Who Have Had a Prior Reunification or Permanent Guardianship

Re-Entry into OHC Last 2 Weeks

Removal Episodes for Children with a Prior Reunification or Permanent Guardianship Removals entered into FSFN between 09/11/23 - 09/24/23									
Current Removal Case ID	Child Id	Current Agency	Prior Unit	Current Removal Date	Prior PG or Reunification Discharge Date	Length from Prior Discharge to Current Removal (months)	Range Prior Discharge to Current Removal	SM07 Cohort	FSFN Entry Date
100851749	102992068	OHU	142858 OHU-POLK	9/18/2023	7/26/2023	1	< 1.0 yr	Yes	9/21/23

Source: FSFN Data Warehouse Ad Hoc Report,

## Scorecard Measures 7 – Children Who Do Not Re-Enter into OHC after Achieving Permanency

SM07 - Percent of children exiting care to a permanent home within 12 months of entering care – Target = 91.7% or Greater

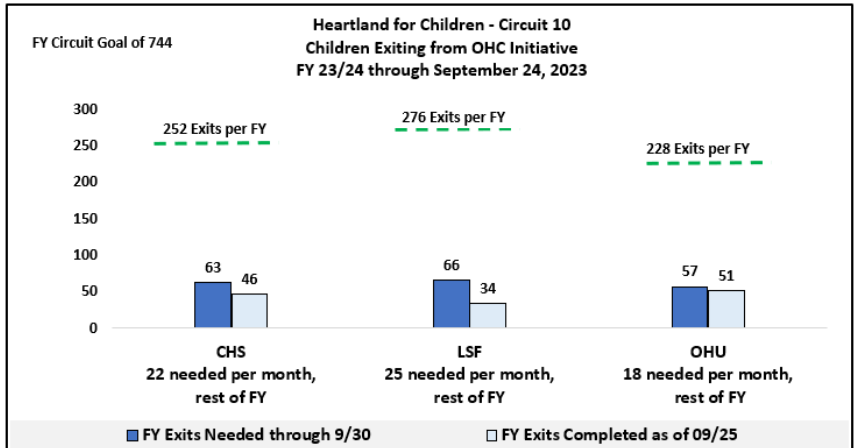
FY 23/24 Contract Measure

FY 23/24 as of 09/24/23 Children Who Do <u>Not</u> Re-Enter Care within 12 Months for Children Achieving Permanency July 2021 - June 2022			
Agency	Maintained No Removal Episode	Total Children Permanency w/in 1 year	Percentage Permanency Maintained
CHS	53	62	85.5%
LSF	36	37	97.3%
OHU	92	93	98.9%
<b>HFC Total</b>	<b>181</b>	<b>192</b>	<b>94.27%</b>
<b>Statewide</b>	<b>2,837</b>	<b>3,074</b>	<b>92.29%</b>

Source: Children Who Do Not Re-Enter Foster Care within Twelve (12) Months of Moving to a Permanent Home On-Demand Listing - OCWDRU Report #1100



# FY 2023-2024 Exiting Out-of-Home Care Initiative



Children Exiting Out-of-Home Care as of 09/24/23

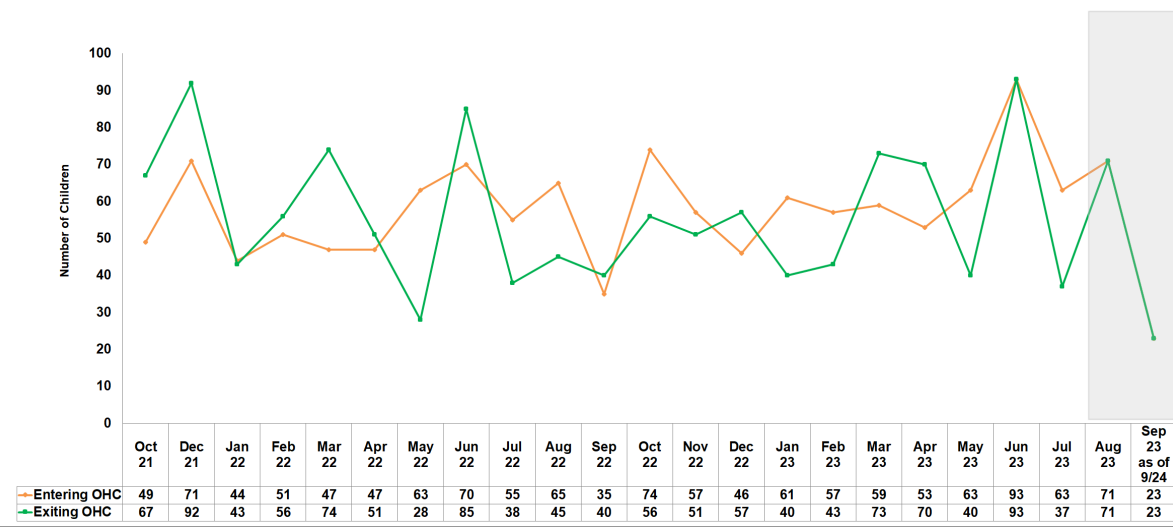
Green: Month's CMO or Circuit reached their monthly exits

Monthly Need Rest of FY	Jul 23	Aug 23	*Sep 23	Oct 23	Nov 23	Dec 23	Jan 24	Feb 24	Mar 24	Apr 24	May 24	Jun 24
CFS	22	7	23	16								
LSF	25	12	16	6								
OHU	18	18	32	1								
HFC	65	37	71	23								

\*Partial Month

Source: FSN Report 1182, excluding 18+, EFC

**Heartland for Children - Circuit 10**  
 Number of Children Entering and Exiting OHC per Month  
 Last 24 Months Trending Through 09/24/23



# Scorecard Measures 5 - Children Achieving Permanency within 12 Months (Fiscal Year 23/24)

Target = 40.5%

Percentage to reach Yellow = 36.5%

Scorecard Measure #5 - FY 23/24, Target 40.5%				Percent Timely FY 22/23 (last FY)	% Increase Since 8/20
Children Achieving Permanency within 0-12 Mths for Children Entering OHC July 2022 to June 2023 (as of 09/24/23)					
Agency	Permanency within 12 mths	Total Children Entered OHC	Percent Timely Reunification		
CHS	50	254	19.7%	27.8%	6.4%
LSF	35	248	14.1%	18.8%	6.0%
OHU	46	232	19.8%	38.5%	3.8%
<b>HFC Total</b>	<b>131</b>	<b>734</b>	<b>17.85%</b>	<b>28.82%</b>	<b>5.4%</b>
<b>Statewide</b>	<b>1,669</b>	<b>10,161</b>	<b>16.43%</b>	<b>29.15%</b>	<b>3.7%</b>



Scorecard Measure #5 -FY 2023 / 2024, Target 40.5%				
Children Achieving Permanency within 0-12 Mths				
Data as of : 9/24/2023				
Agency / Unit	Permanency within 12 mths	Total Children Entered OHC	Percent Timely Reunification	% Increase Since 8/20
<b>CHS</b>	<b>50</b>	<b>254</b>	<b>19.7%</b>	<b>6.4%</b>
141832-CHSFL	0	7	0.0%	0.0%
141834-CHSFL	4	4	100.0%	0.0%
141846-CHSFL	24	109	22.0%	4.9%
141839-CHSFL	9	60	15.0%	8.3%
141835-CHSFL	0	11	0.0%	0.0%
141852-CHSFL	12	62	19.4%	9.2%
14-HFC-CHS ADMIN UNIT	1	1	100.0%	0.0%
<b>LSF</b>	<b>35</b>	<b>248</b>	<b>14.1%</b>	<b>6.0%</b>
141828-LSF	0	12	0.0%	0.0%
141827-LSF	14	41	34.1%	22.6%
141836-LSF	3	31	9.7%	9.7%
141845-LSF	5	31	16.1%	2.8%
141848-LSF	1	29	3.4%	3.4%
141849-LSF	4	43	9.3%	4.8%
141850-LSF	0	21	0.0%	0.0%
141929-LSF	8	38	21.1%	0.0%
14-HFC-LSF ADMIN UNIT	0	2	0.0%	0.0%
<b>OHU</b>	<b>46</b>	<b>232</b>	<b>19.8%</b>	<b>3.8%</b>
142853-OHU-HARDEE	2	54	3.7%	0.3%
142854-OHU-HIGHLANDS	3	3	100.0%	0.0%
142855-OHU-HIGHLANDS	10	44	22.7%	4.9%
140121-OHU-HIGHLANDS	1	6	16.7%	16.7%
142858 OHU-POLK	10	44	22.7%	0.2%
142852-OHU-POLK	6	25	24.0%	16.0%
142856-OHU-POLK	14	56	25.0%	6.2%
<b>HFC Total</b>	<b>131</b>	<b>734</b>	<b>17.8%</b>	<b>5.4%</b>
<b>Statewide</b>	<b>1,669</b>	<b>10,161</b>	<b>16.4%</b>	<b>4.0%</b>

Source: Children Exiting Out-of-Home Care to a Permanent Home within Twelve Months of Entering Care On-Demand Listing - Report #1119  
 Reporting Period: July 1, 2022, to June 30, 2023  
 Data as of: September 24, 2023



**Permanency Measure for Children in Out-of-Home Care...**

- More than 12 Months in OHC
- More than 24 Months in OHC

**Scorecard Measures 6:** Percent of children exiting care to a permanent home for children in care 12-23 months,

Target = 43.6%

Scorecard Measure #6 - FY 23/24, Target 43.6%				Percent Timely FY 22/23 (last FY)	% Increase Since 8/20
Children Achieving Permanency within 12-23 Mths for Children in OHC 12-23 Months as of 07/01/23 (as of 09/24/23)					
Agency	Permanency within 12-23 mths	Total Children LOS 12-23 mths	Percent Timely Reunification		
CHS	10	105	9.5%	37.9%	9.5%
LSF	7	108	6.5%	41.7%	3.7%
OHU	23	99	23.2%	49.0%	11.4%
<b>HFC Total</b>	<b>40</b>	<b>312</b>	<b>12.8%</b>	<b>42.6%</b>	<b>8.0%</b>
<b>Statewide</b>	<b>560</b>	<b>5,448</b>	<b>10.3%</b>	<b>46.2%</b>	<b>7.3%</b>

SM06 - Percentage to reach Yellow = 39.4%

Source: Children Achieving Permanency w/ 12 Months for children in OHC 12-23 Months On-Demand Listing - Report #1138

**Statewide Measure:** Percent of children exiting care to a permanent home for children in care 24 months or longer

Target = 30%

Statewide Measure - FY 23/24, Target 30%				Percent Timely FY 22/23 (last FY)	% Increase Since 8/20
Children Achieving Permanency within 12 Months for Children in OHC 24+ Months as of 07/01/23 (as of 09/24/23)					
Agency	Permanency within 12 months	Total Children in OHC 24+ Months	Percent Timely Reunification		
CHS	10	95	10.5%	51.4%	10.5%
LSF	9	128	7.0%	44.3%	5.5%
OHU	14	96	14.6%	42.0%	9.4%
<b>HFC Total</b>	<b>33</b>	<b>319</b>	<b>10.3%</b>	<b>46.2%</b>	<b>8.2%</b>
<b>Statewide</b>	<b>512</b>	<b>5,535</b>	<b>9.25%</b>	<b>42.88%</b>	<b>6.4%</b>

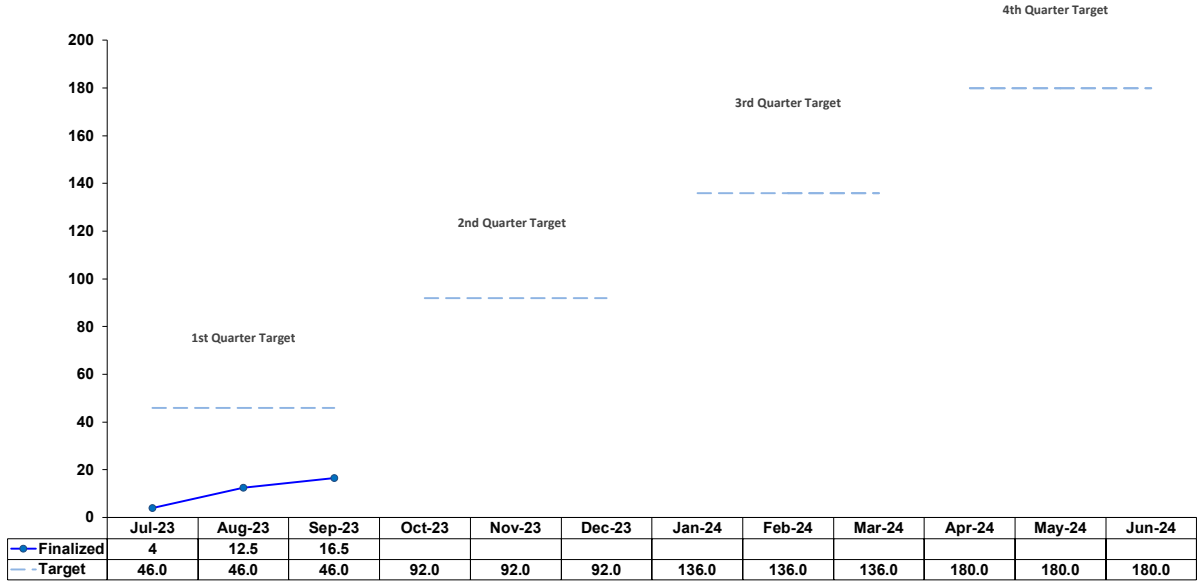
Source: Children Achieving Permanency w/ 12 Months for children in OHC 24 Months or Longer On-Demand Listing - Report #1197



# Adoption Finalizations

Percent of Adoptions Finalized with 24 Months of Removal & Percent of Adoption Goal Met

Heartland for Children - DCF Circuit 10  
Adoption Finalizations for FY 23-24



Source: HFC Adoption Database; Data-as-of: September 25, 2023

FY 2023-2024 Quarterly Adoption Target				
CMO	Q1	Q2	Q3	Q4
CHS	13	13	13	13
LSF	18	18	17	17
OHU	15	15	14	14
<b>Total</b>	<b>46</b>	<b>92</b>	<b>136</b>	<b>180</b>

## Upcoming Finalization Dates

- October 11 & 18, 2023
- November 8 & 29, 2023
- December 6 & 13, 2023

## Adoption Finalizations

FY 23-24 - 1st Quarter as of 09/25/23

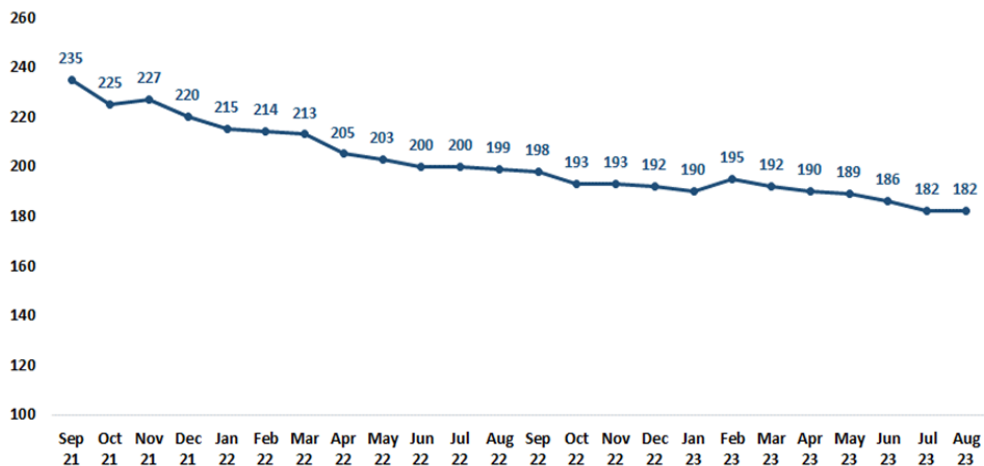
CMO	Finalized Adoptions	Quarter Target	Quarter Target Met
CHS	4.5	13	<b>34.6%</b>
LSF	9	18	<b>50.0%</b>
OHU	3	15	<b>20.0%</b>
<b>Total</b>	<b>16.5</b>	<b>46</b>	<b>35.9%</b>



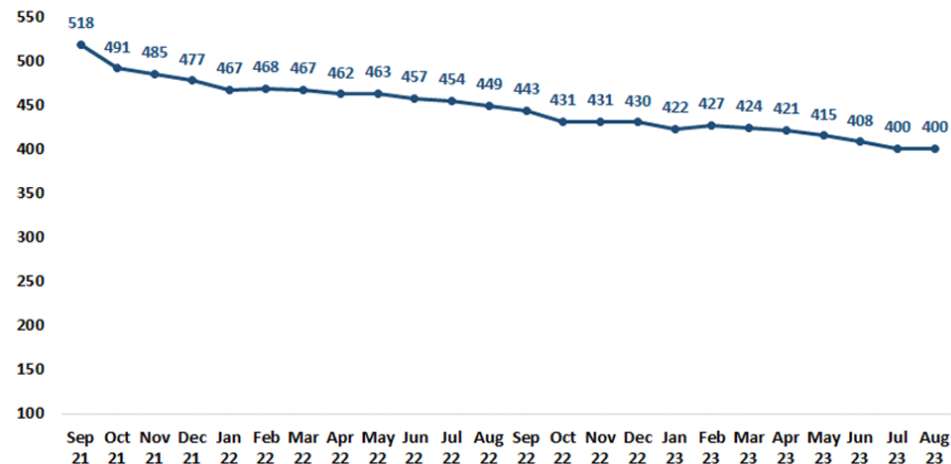
# Number of Foster Homes and Foster Bed Capacity

## 24 Month Trend

Heartland for Children  
Number of Foster Homes - Months End Snapshot  
Last 24 Months through August 2023

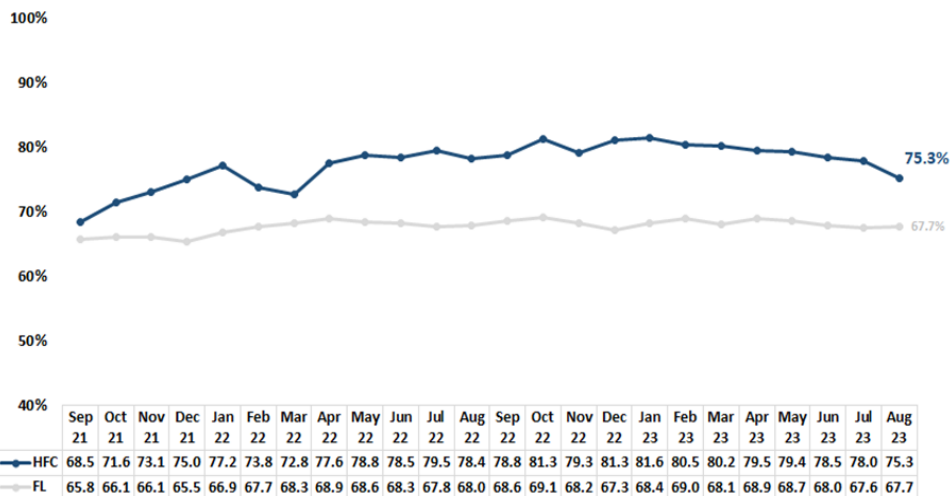


Heartland for Children  
Number of Foster Beds - Months End Snapshot  
Last 24 Months through August 2023

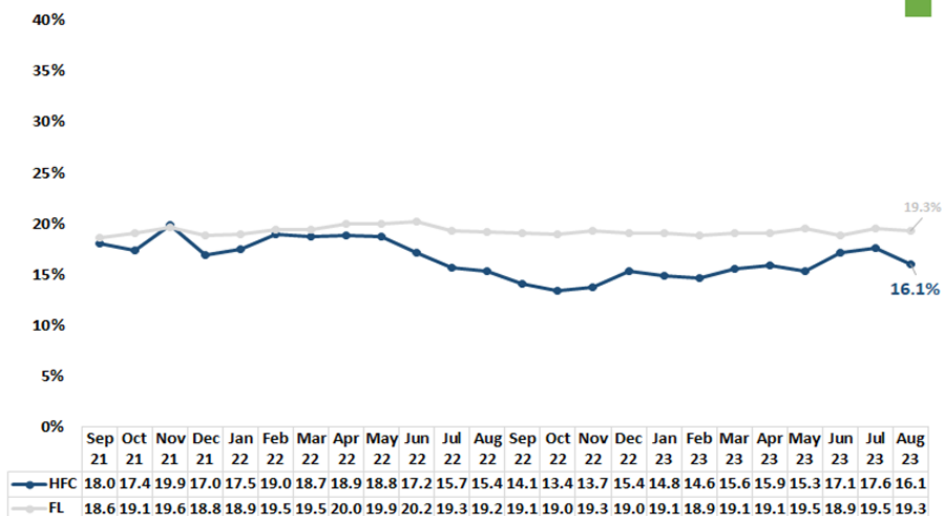


➤ Percent of Foster Home Utilization  
➤ Teen Placement in a Foster Home

Heartland for Children  
Percent of Foster Homes Utilized (w/a Placement)  
Last 24 Months through August 2023



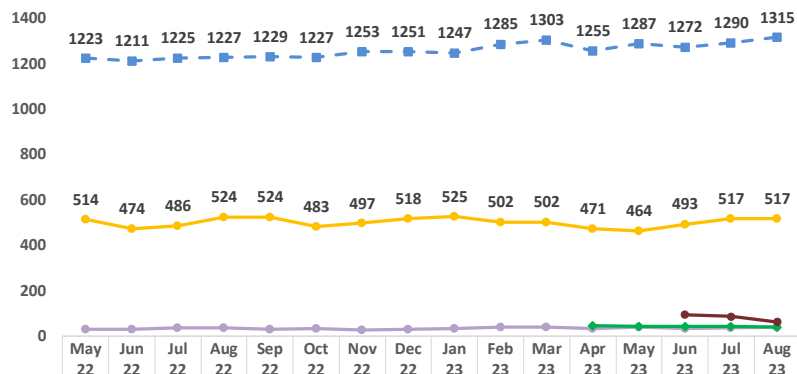
Heartland for Children  
Percent of Foster Homes w/a Teen Placement  
Last 24 Months through August 2023



# Children Served at Month End by Service Type

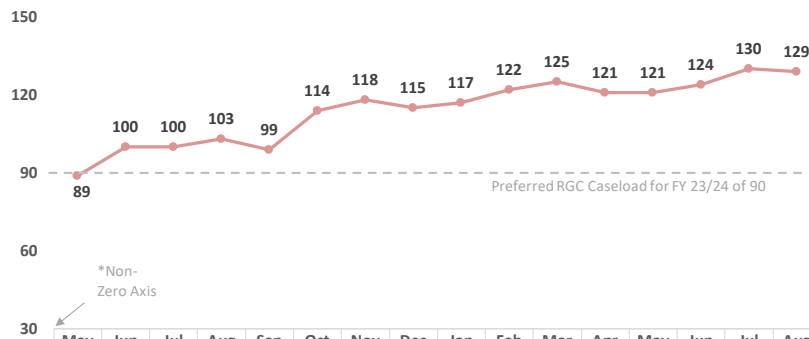
## Number and Percent of Children Serviced in Residential Care

**Heartland for Children**  
**Number of Children Active by Service Type**  
 Point in Time Month End Data through August



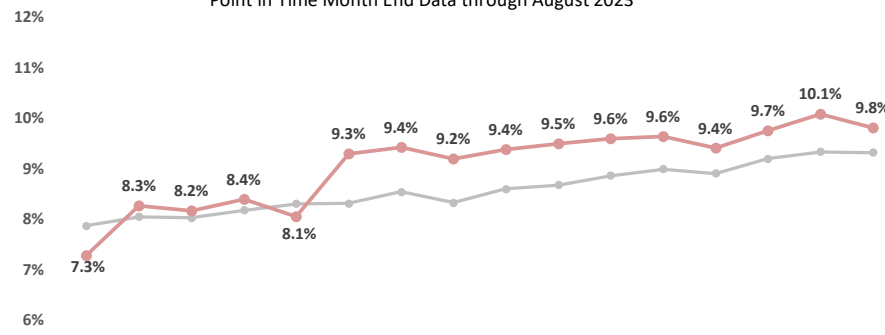
Month	OHC Total	IHC Total	18+ IL	18+ EFC	Family Support
May 22	1223	514	30		
Jun 22	1211	474	30		
Jul 22	1225	486	35		
Aug 22	1227	524	36		
Sep 22	1229	524	31		
Oct 22	1227	483	33		
Nov 22	1253	497	28		
Dec 22	1251	518	31		
Jan 23	1247	525	34		
Feb 23	1285	502	39		
Mar 23	1303	502	39		
Apr 23	1255	471	34	46	
May 23	1287	464	38	44	
Jun 23	1272	493	34	42	94
Jul 23	1290	517	35	43	86
Aug 23	1315	517	38	40	63

**Heartland for Children**  
**Number of Children in Residential Group Care**  
 Point in Time Month End Data through August 2023



Month	RGC	RTC	% OHC in RGC	OHC Total
May 22	89		7.3%	1223
Jun 22	100		8.3%	1211
Jul 22	100		8.2%	1225
Aug 22	103		8.4%	1227
Sep 22	99		8.1%	1229
Oct 22	114		9.3%	1227
Nov 22	118		9.4%	1253
Dec 22	115		9.2%	1251
Jan 23	117		9.4%	1247
Feb 23	122		9.5%	1285
Mar 23	125		9.6%	1303
Apr 23	121	111	9.6%	1255
May 23	121	109	9.4%	1287
Jun 23	124	112	9.7%	1272
Jul 23	130	119	10.1%	1290
Aug 23	129	115	9.8%	1315

**Heartland For Children (Red Line)**  
**Percentage of OHC Children in RGC - HFC vs. Statewide**  
 Point in Time Month End Data through August 2023



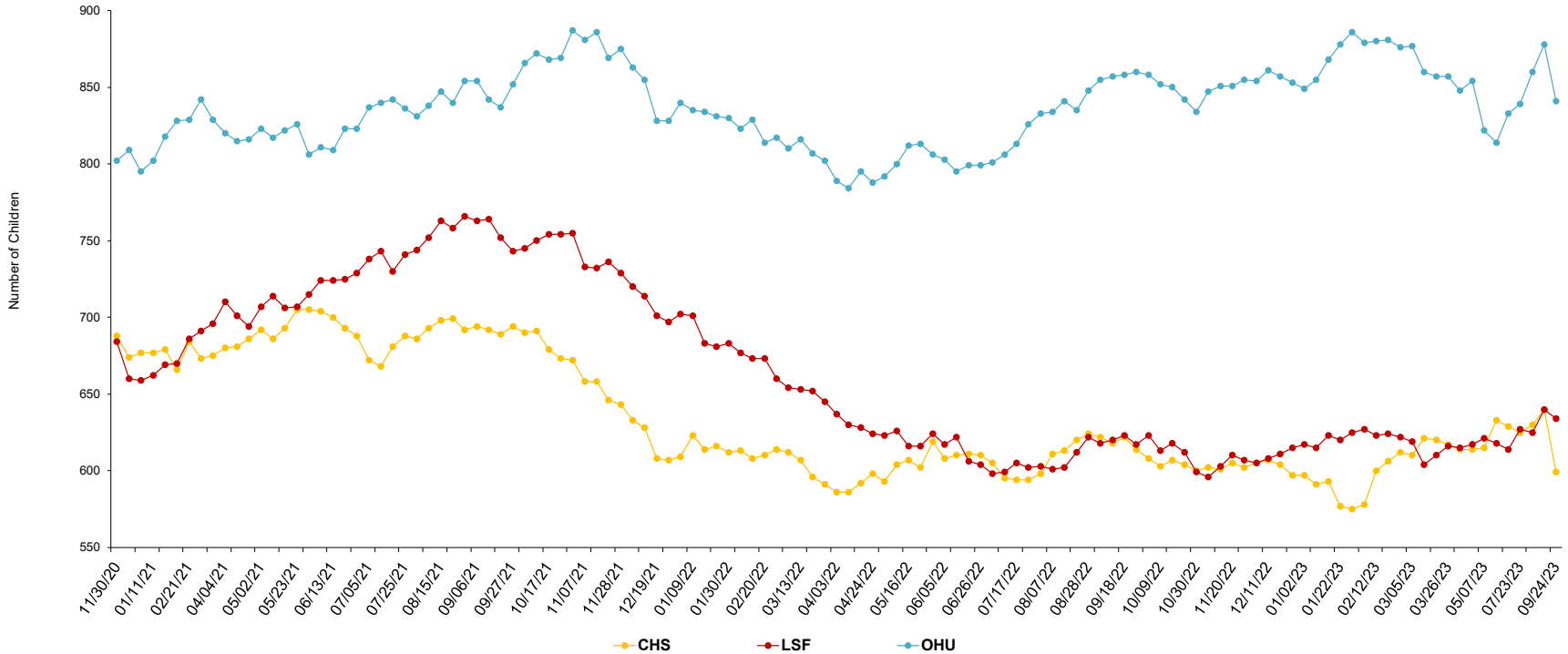
Month	FL (%)
May 22	7.9%
Jun 22	8.0%
Jul 22	8.0%
Aug 22	8.2%
Sep 22	8.3%
Oct 22	8.3%
Nov 22	8.5%
Dec 22	8.3%
Jan 23	8.6%
Feb 23	8.7%
Mar 23	8.9%
Apr 23	9.0%
May 23	8.9%
Jun 23	9.2%
Jul 23	9.3%
Aug 23	9.3%

# Caseload Census Information

## CBC Services Weekly Caseloads By CMO

Number of Children by CMO						
Last 6 Reporting Periods						
Agency	7/9/2023	7/23/2023	8/6/2023	8/20/2023	9/4/2023	9/24/2023
<b>CHS</b>	629	625	616	630	640	<b>599</b>
<b>LSF</b>	614	627	620	625	640	<b>634</b>
<b>OHU Primary</b>				616	623	<b>598</b>
<b>OHU/OCS</b>				244	255	<b>243</b>
<b>OHU Total</b>	833	839	848	860	878	<b>841</b>
<b>NTF</b>					25	<b>25</b>
<b>HFC Total</b>	2,065	2,076	2,091	2,084	<b>2,158</b>	<b>2,099</b>

**Caseload Census By CMO**  
**Primary and Out-of-County Assignments**  
 Weekly data as of 09/24/2023



Source: FSN Children Active Receiving Services Report



# Caseload Census Information

Case Manager Caseload Breakdown by Agency – Data as of 09/24/23

Count of Case Managers Within a Caseload Range							
CMO	1-5 Children in Caseload	6-15 Children in Caseload	16-24 Children in Caseload	25-29 Children in Caseload	30+ Children in Caseload	Total Case Managers*	Avg # of Children per CM
CHS	2	5	3	0	11	21	28.0
LSF	5	6	20	4	0	35	17.0
OHU	0	2	7	9	10	28	28.7
# of CMs	7	13	30	13	21	84	23.6

Percent of Case Managers That Are at or Under the National Caseload Standard of 15			
CMO	# Case Managers w/ Primary Caseload	# with Caseload at 15 or lower	Percent at 15 or lower
CHS	21	7	33.3%
LSF	35	11	31.4%
OHU	28	2	7.1%
HFC	84	20	23.8%

\* Data Excludes Unit Supervisors, FTC Facilitators & Resigned CMs Count

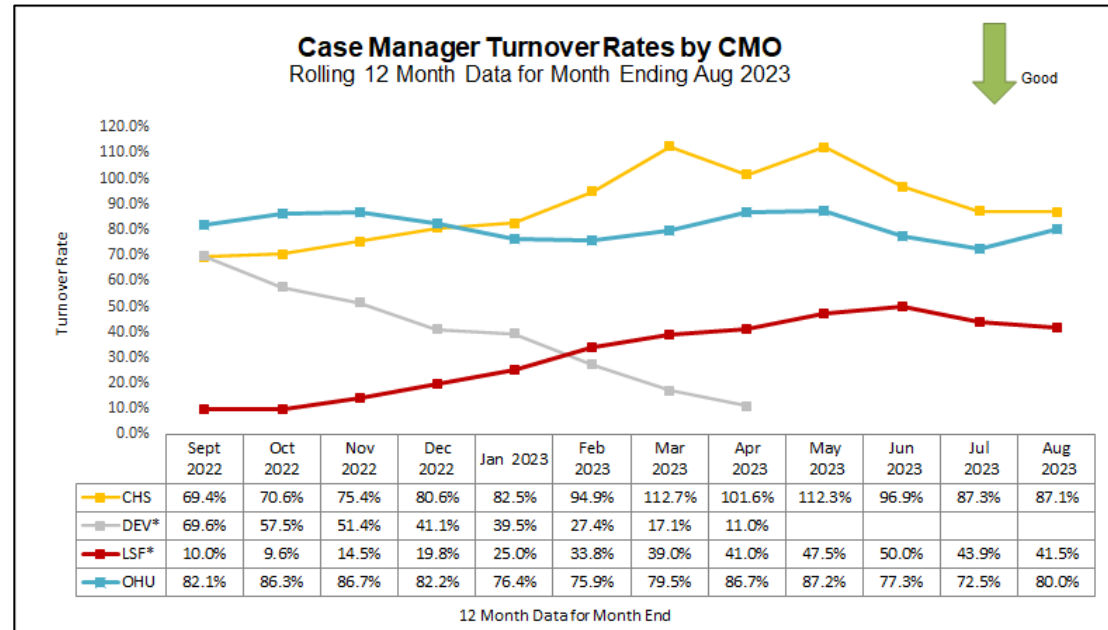
## Case Management Organization Turnover

### 12 Month Case Manager Turnover Rates by Agency

Employee Turnover Rates By CMO		
12 Month Data for Month Ended Aug 2023		
CMO	Case Manager	Case Manager Supervisor
CHS	87.1%	58.8%
LSF*	41.5%	30.8%
OHU	80.0%	60.0%

7/2/22 - Transition from Devereux to Lutheran Services Florida; the 12-months required for a "Rolling Year Total" has been split between agencies:

- DEV: Mar-22 to Jun-22 (4 months)
- LSF: Jul-22 to Feb-23 (8 months)



# Healthcare Information

Data Entered Into FSFN for Children in Out-of-Home Care

Health Information in FSFN for Children in OHC as of 09/24/23						
Agency	# of Children in OHC	% With a Medical Record in FSFN	% With Medical Service in last 12 Months	% With Dental Service in Last 7 months	% with Immunizations Up to Date	Overall Performance
CHS	422	100.0%	97.4%	94.7%	97.6%	96.6%
LSF	480	99.8%	96.9%	92.6%	97.9%	95.8%
OHU	383	100.0%	94.8%	83.6%	98.2%	92.2%
<b>HFC</b>	<b>1285</b>	<b>99.9%</b>	<b>96.4%</b>	<b>90.7%</b>	<b>97.9%</b>	<b>95.0%</b>

Source: FSFN report 1009 "Source: "Healthcare Service Information for OHC"

Health Information in FSFN as of 09/24/23				
Agency	# of Missing Medical Records	# of Medical Appointments Needing Update	# of Dental Appointments Needing Update	# of Immunization Needing Update
CHS	0	11	14	10
LSF	1	15	24	10
OHU	0	20	38	7
<b>Total</b>	<b>1</b>	<b>46</b>	<b>76</b>	<b>27</b>

Source: "Healthcare Service Information for OHC - Report 1009"

## Scorecard Measures 9 & 10 - Children Receiving Healthcare Services

SM 9 - Percent of children in out-of-home care who have received medical services in the last 12 months – Target = 95%

SM 10 - Percent of children in out-of-home care who have received dental services in the last 7 months – Target = 95%

Scorecard Measure #9 Children Receiving Medical Services Within Last 12 Mths Daily Snapshot as of 09/24/23			
Agency	Appointment within last 12 mths	Total Children out-of-home care	Percent Medical Services Received
CHS	411	422	97.4%
LSF	465	480	96.9%
OHU	363	383	94.8%
<b>HFC Total</b>	<b>1239</b>	<b>1285</b>	<b>96.4%</b>
<b>Statewide</b>	<b>17,478</b>	<b>19,650</b>	<b>88.9%</b>

Source: FSFN report 1096 – Children in OHC Who Received Medical Services in the Last Twelve Months

Scorecard Measure #10 Children Receiving Dental Services Within Last 7 Mths Daily Snapshot as of 09/24/23			
Agency	Appointment within last 7 mths	Total Children out-of-home care	Percent Dental Services Received
CHS	252	266	94.7%
LSF	299	323	92.6%
OHU	194	232	83.6%
<b>HFC Total</b>	<b>745</b>	<b>821</b>	<b>90.74%</b>
<b>Statewide</b>	<b>9,825</b>	<b>13,254</b>	<b>74.13%</b>

Source: FSFN report 1093 – Children in OHC Who Received Dental Services in the Last Seven Months





# Caseload Census by Case Manager and Organization

Data as of 09/24/23

Caseload of 1 - 5 Children		
CMO	Case Workers	#
NTF	Bates, Brittany	5
CHS	Oneall, Tracy	5
LSF	Blocker, Amanda	4
LSF	Blackwood, Sandra	4
NTF	Wolf, Lauren	3
CHS	Vegter, Hope	2
LSF	Franklin, Yoshika	2
NTF	Buckley, Susan	2
LSF	Collins, Sara	1
LSF	Forbes, Sabrina	1
NTF	Zaccari, Caitlyn	1

Caseload of 6 - 15 Children (-3)		
CMO	Case Workers	#
LSF	Davis, Katelyn	15
CHS	Meola, Laura	15
CHS	Dawes, Dominique	15
LSF	Brown, Desiree	15
CHS	Cruz, Melissa	13
LSF	Owens, Guillermina	12
OHU	Board, Brianna	11
LSF	Lee, Tamar	11
LSF	Williams, Careatha	11
CHS	Whiting, Kari	9
NTF	Eplin, Sophia	8
LSF	Barrow, Steffanie	7
OHU	Shay, Ryan	7
CHS	Mattison, Sharon	6

Caseload of 16 - 24 Children (+1)		
CMO	Case Workers	#
LSF	Cruz, Veronica	24
OHU	Southall, Akeva	24
LSF	Londono, Reina	24
LSF	Bon-Fiol, Nikol	24
LSF	Willingham, Jadashia	23
LSF	Escartin Vega, Kathia	22
LSF	Morris, Alundrea	22
LSF	Mculty, Andriea	22
LSF	Louis, Rachelle	22
CHS	Beasley, Charlita	21
OHU	Price, Sydney	21
CHS	Bruce, Kortney	21
OHU	Howe, Danielle	20
LSF	Lynch, Rodina	20
LSF	Evans, Mikayla	19
OHU	Dedrick, Dawn	19
LSF	Ellis, Darren	19
LSF	Johnson, Tania	19
LSF	Pierce, Pamela	19
LSF	Hettmansperger, Katelin	19
LSF	Brown, Ciara	19
LSF	Coleman, Tangela	18
LSF	Young, Vanessa	18
LSF	Bickel, Sherry	17
OHU	Johnson, Danna	17
LSF	Ramnaugh, Shan	16
CHS	Green, Brejanna	16
OHU	Nettles, Markisha	16
LSF	Lott, Carla	16
OHU	Villa, Ana	16

Caseload of 25 - 29 Children (+2)		
CMO	Case Workers	#
OHU	Cleveland, Tammy	29
OHU	Bello, Bianca	29
OHU	Mullis, Felicia	28
LSF	Nail, Demetria	28
OHU	Cherident, Camy	27
OHU	Reyes, Jasmine	26
LSF	Renfro, Andrew	26
OHU	Johnson, Randi	26
OHU	Brutus, Marie	25
LSF	Pamphile, Emmanuella	25
OHU	Thompson, Wyshana	25
OHU	Garcia, Anakeidie	25
LSF	Burciaga, Cristina	25

Caseload of 30+ Children		
CMO	Case Workers	#
OHU*	Bailon, Margarita	56
OHU*	Fuentes, Norma	54
OHU*	Villegas, Anna	47
OHU*	Washington, Woodrica	46
CHS	Hiers, Katherine	44
CHS	Sisk, Sarah	44
CHS	Fort, Angela	42
CHS	Mcbride, Hannah	42
CHS	Bain, Claire	42
CHS	Pression, Alexa	40
CHS	Saimplice, Sherby	37
OHU*	Smith, Lorie	37
CHS	Kaina, Kelly	36
CHS	Mcp hail, Allissa	36
OHU	Pizarro, Frances	35
OHU	Kohn, Ludessa	34
CHS	Borden, Kayla	33
OHU	Azizi, Ellarie	33
CHS	White, Melinda	33
OHU*	Simmons, Shannon	33
OHU	Ventura, Armando	30

Unit Supervisors Carrying Cases (-3)		
CMO	Case Workers	#
OHU	Colon, Lisette	12
OHU	Gadson, Berlendah	11
CHS	Luskey, Taylor	6

### Circuit 10 Children Active by Assignment Role for CMO TAYS and FTC Workers

Data as of 09/24/23

Case Worker	Pri.	Sec.	OOC	Grand Total
Cruz, Cheyleen	8	0	0	8
Mills, Ciyatt	12	0	0	12
<b>FTC - CHS</b>	<b>20</b>	<b>0</b>	<b>0</b>	<b>20</b>
Nieves, Carlos	27	14	0	41
Humber, John	0	19	0	19
<b>TAYS - CHS</b>	<b>27</b>	<b>14</b>	<b>0</b>	<b>41</b>
Peralta, Joshua	30	2	0	32
Jones, Dane	0	34	0	34
<b>TAYS - LSF</b>	<b>30</b>	<b>2</b>	<b>0</b>	<b>32</b>
Metelus, Getro	3	19	2	24
Sandbrook, Mary	6	25	0	31
Vazquez, Roger	9	24	2	35
<b>TAYS - OHU</b>	<b>18</b>	<b>68</b>	<b>4</b>	<b>90</b>
<b>Circuit 10 Total</b>	<b>95</b>	<b>84</b>	<b>4</b>	<b>183</b>

*Pri.* = Primary - *Sec.* = Secondary - *OOC* = Out of County

*Data Source* : FSN Report - Children Active Receiving In-Home or Out-of-Home Services Daily Listing by District

\*These OHU case managers contain caseloads that are over 65% OCS cases. On average an OCS case compares to 1.54 regular cases (i.e., 20 OCS cases approx. equals 13 regular cases).

All CHS case managers are supported by Case-Aim support. On average a Case-Aim supported case compares to 1.33 regular cases (i.e., 20 cases with Case-Aim approx. equals 15 cases without Case-Aim support).



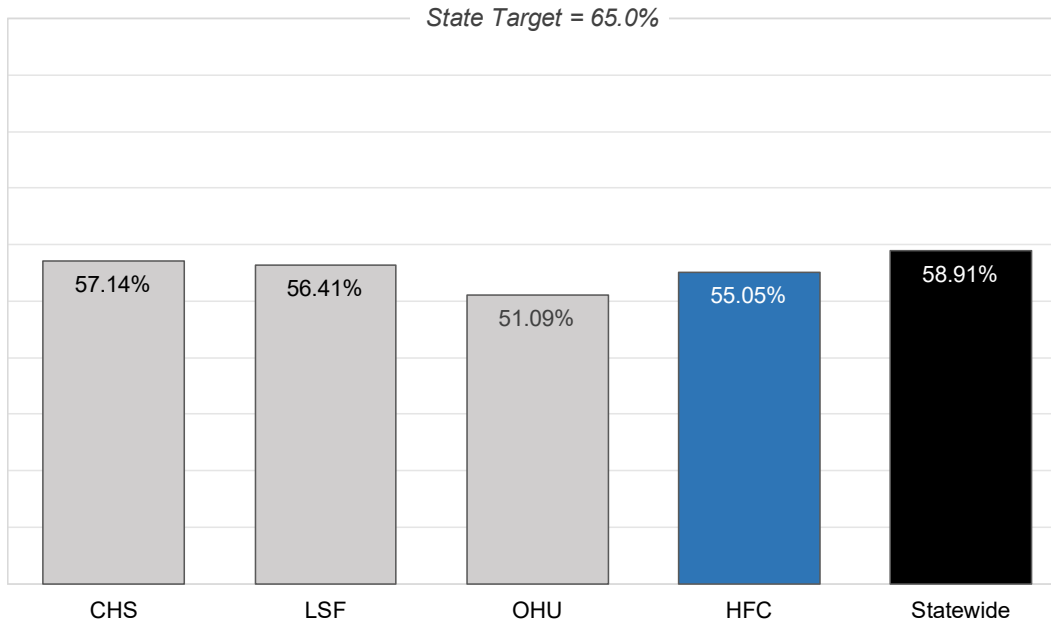
## Scorecard Measure 12 – Separated Siblings

SM12 - Percentage of sibling groups in out-of-home care where all siblings are placed together – Target = 65.0%

SM12 - Percent of Sibling Groups Placed Together FY 22-23 Snapshot data as of September 24, 2023			
Agency	Number of Cases w/ Siblings Together	Total Cases Sibling Groups	Percent of Siblings Placed Together
CHS	56	98	57.14%
LSF	66	117	56.41%
OHU	47	92	51.09%
<b>HFC</b>	<b>169</b>	<b>307</b>	<b>55.05%</b>
<b>Statewide</b>	<b>2,768</b>	<b>4,699</b>	<b>58.91%</b>

Number of sibling groups to achieve SM12 target – 28 Sibling Groups

SM-12 Percent of Sibling Groups Placed Together  
FY 22-23 Snapshot data as of 09/24/23



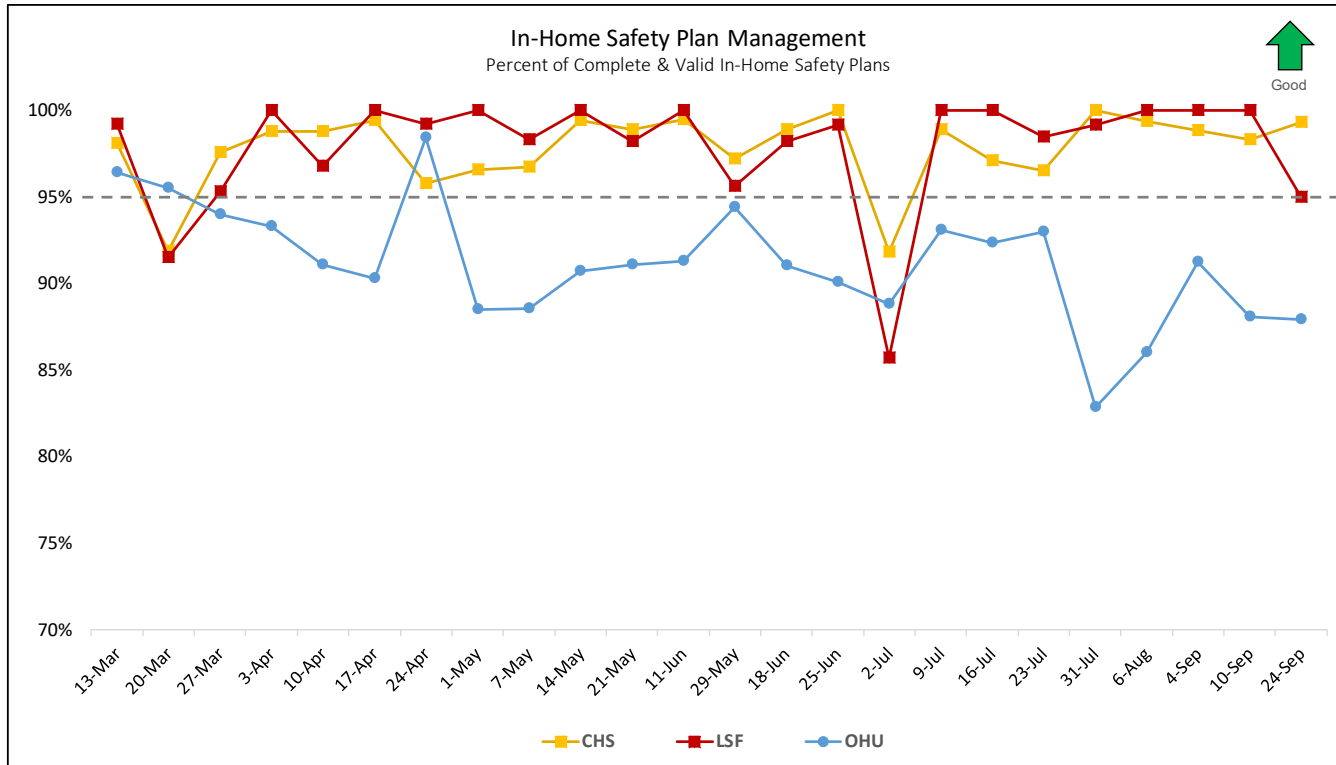
Source: FSN Rpt 1125 "Sibling Groups Where All Siblings Are Placed Together On-Demand Listing"



# In-Home Safety Plan Management

Percent of Completed In-Home Safety Plans under 180 Effective Days – Target: **95.0%**

In-Home Safety Plan Management				
Percent of <u>Completed</u> In-Home Safety Plans under 180 <u>Effective</u> Days as of 09/24/23				
Agency	No -or- Expired Safety Plans	Complete & Valid Safety Plans	Total Required Safety Plans	Percentage Complete
CHS	1	148	149	99.3%
LSF	6	114	120	95.0%
OHU	18	131	149	87.9%
<b>HFC Total*</b>	<b>25</b>	<b>393</b>	<b>418</b>	<b>94.02%</b>



Source: FSN Report 1301 "Case Management Safety Management Listing"



## Unified Home Studies – Approval Status

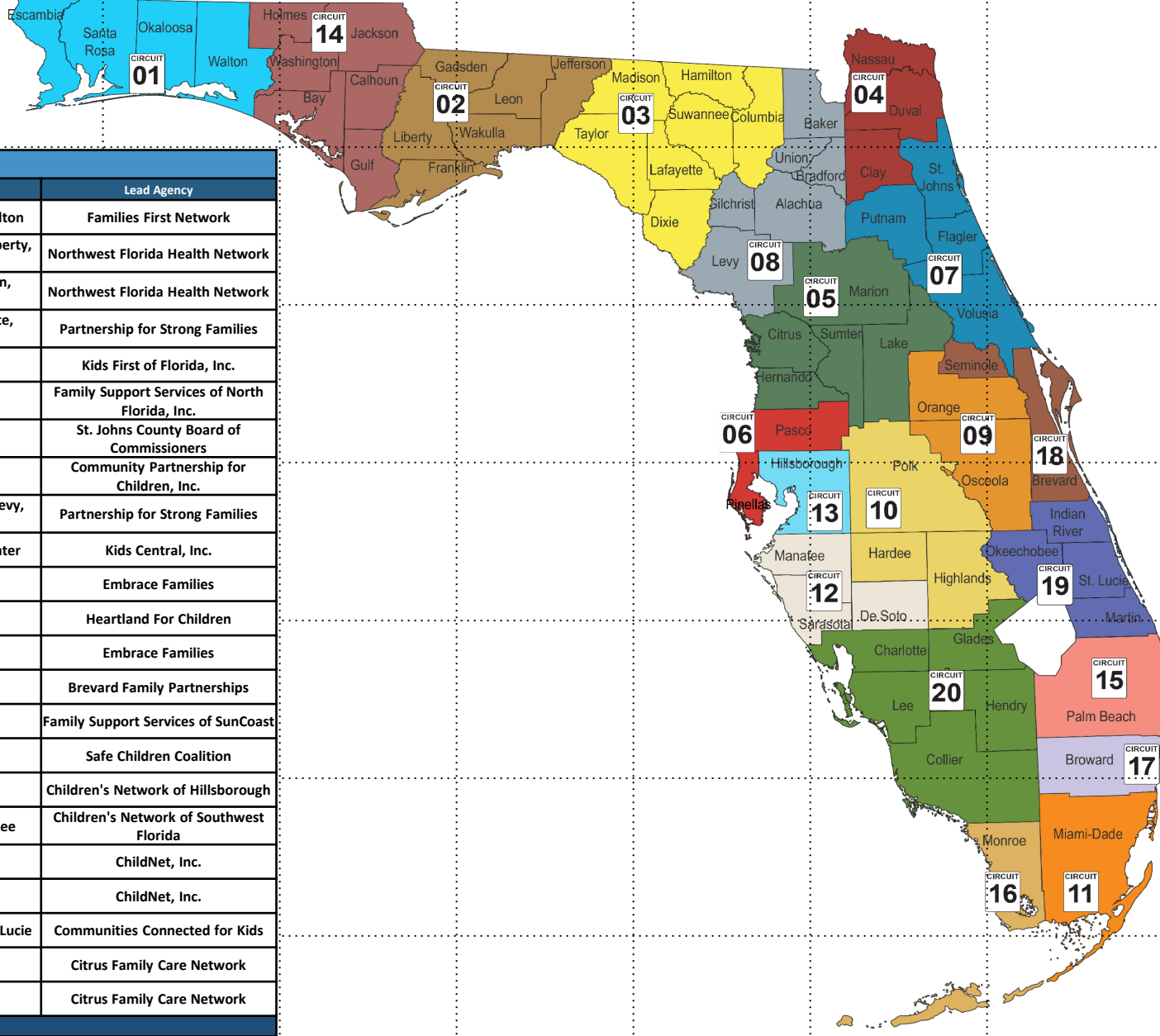
Cases with a Pending or No UHS – 45+ Days Past Due; **Data-as-of:** 09/25/2023

<b>Relative / Non-Relative Unified Home Study Approval Status</b> 45 Days since Case Transfer - <b><u>Past Due</u></b>			
<b>Agency</b>	<b># of UHS</b>	<b>Status - Pending</b>	<b>Status - No UHS</b>
CHS	2	1	1
LSF	7	3	4
OHU	8	1	7
<b>Total</b>	<b>17</b>	<b>5</b>	<b>12</b>





# Community Based Care Lead Agency Map



## LEGEND

Circuit	Region	Counties	Lead Agency
1	North West	Escambia, Okaloosa, Santa Rosa, Walton	Families First Network
2		Franklin, Gadsden, Jefferson, Leon, Liberty, Wakulla	Northwest Florida Health Network
14		Bay, Calhoun, Gulf, Holmes, Jackson, Washington	Northwest Florida Health Network
3	North East	Columbia, Dixie, Hamilton, Lafayette, Madison, Suwannee, Taylor	Partnership for Strong Families
4		Clay	Kids First of Florida, Inc.
4		Duval, Nassau	Family Support Services of North Florida, Inc.
7		St. Johns	St. Johns County Board of Commissioners
7		Flagler, Putnam, Volusia	Community Partnership for Children, Inc.
8		Alachua, Baker, Bradford, Gilchrist, Levy, Union	Partnership for Strong Families
5	Central	Citrus, Hernando, Lake, Marion, Sumter	Kids Central, Inc.
9		Orange, Osceola	Embrace Families
10		Hardee, Highlands, Polk	Heartland For Children
18		Seminole	Embrace Families
18		Brevard	Brevard Family Partnerships
6	Sun Coast	Pasco, Pinellas	Family Support Services of SunCoast
12		DeSoto, Manatee, Sarasota	Safe Children Coalition
13		Hillsborough	Children's Network of Hillsborough
20		Charlotte, Collier, Glades, Hendry, Lee	Children's Network of Southwest Florida
15	South East	Palm Beach	ChildNet, Inc.
17		Broward	ChildNet, Inc.
19		Indian River, Martin, Okeechobee, St. Lucie	Communities Connected for Kids
11	Southern	Miami-Dade	Citrus Family Care Network
16		Monroe	Citrus Family Care Network



## AWARENESS FOR OCTOBER

- Foster Youth Voice Month
- Domestic Violence Awareness
- Safe Sleep Awareness Month
- 10/31 Halloween

## HEALTH RESOURCES

For more COVID information specific to Florida, go to [floridahealthcovid19.gov](https://floridahealthcovid19.gov)

Call Center is available 24/7 (866) 779-6121 or email [COVID-19@flhealth.gov](mailto:COVID-19@flhealth.gov).

For more vaccine information go to <https://floridahealthcovid19.gov/covid-19-vaccines-in-florida/>

## SAFETY RESOURCES

### Internet Safety and Tips

- [Information, Advice and Support to Keep Children Safe Online \(internetmatters.org\)](#)
- [NetSmartz Home \(missingkids.org\)](#)

### Safe Sleep

- [https://www.ounce.org/safe\\_sleep.html](https://www.ounce.org/safe_sleep.html)

### Swim Safety Tips

- Pool Party Water Safety Tips: <https://bit.ly/41UoFcY>
- Water Safety Tips: [https://www.ounce.org/water\\_safety.html](https://www.ounce.org/water_safety.html)

### Hot Car Safety Tips

- <https://www.nhtsa.gov/campaign/heatstroke>

## COMMUNITY RESOURCES

### Central Florida Fall & Halloween Guide

<https://lakelandmom.com/fall-halloween-activities/>

### Free Books for Children 0-5

<https://uwcf.org/dolly-partons-imagination-library/>

### United Way's 211

Call 211 or visit 211.org  
Getting free confidential help for needs such as food, housing, employment, utilities, mental health and much more is just a text, call, or click away.

### ECHO Ministries

Help provide tangible needs to children in foster, adoptive, relative and non-relative care.

To Donate: ECHO Distribution Center every Wednesday from 9AM-12PM at 3625 Century Blvd Unit 1A, Lakeland, FL. <https://www.echoministriesflorida.net/>

### Find Help (Previously Aunt Bertha)

<https://www.findhelp.org/>

Find local resources for food, health, housing, employment programs & other community resources in seconds.

### HOPE FLORIDA

#### A PATHWAY TO PROSPERITY

Call 850-300-HOPE

[myflfamilies.com/services/hope-florida](http://myflfamilies.com/services/hope-florida)

Services offered by Hope Navigators:

- Identifying goals and barriers
- Referrals to local, community-based partners
- One-on-one support to develop a plan to achieve economic-self sufficiency

### Circuit 10 Children's Mental & Behavioral Health Resources

<https://sites.google.com/view/floridac10/mhnbhresources/home>

On this site you will find:

- Heartland for Children's Parent Portal
- MyFloridaMyFamily Community Services
- Florida Mobile Response Team- 24/7 Crisis Assistance
- Florida Statewide Medicaid Managed Care
- Florida Association of Christian Child Caring Agencies
- Florida Network Short-term Residential Programs
- Center for Autism Related Disabilities (CARD)
- National Alliance on Mental Illness
- Post Adoption Support
- Zebra Coalition
- Central FL Behavioral Health Network
- Hope Florida – A Pathway to Prosperity

### Food Distribution Schedule

Polk, Highlands and Hardee Counties  
Food Distribution Sites

[uwcf.org/initiatives/endhunger/schedule/](http://uwcf.org/initiatives/endhunger/schedule/)

### Healthy Families Florida

Family support and coaching program that helps parents provide the safe and stable environments children need for healthy growth and development. [healthyfamiliesfla.org/programs\\_map.html](http://healthyfamiliesfla.org/programs_map.html)

### Domestic Violence Services

Peace River Center's Domestic Violence Program provides free, confidential services for individuals affected by domestic violence, sexual assault and human trafficking crimes, their family members and friends in Polk, Hardee and Highlands counties.

### 24-Hour Domestic Violence Crisis Lines

Hardee/Highlands 863.386.1167

Polk 863.413.2700

### Victim Services Office Line 863.413.2708

Victim Services – Polk County 1860 South Crystal Lake Drive, Lakeland, FL 33801

### Victim Services – Hardee/Highlands Counties

1570 Lakeview Drive, Sebring, FL 33870

## HFC EVENTS

### Foster Care Info Night

Tuesday, October 10<sup>th</sup> at 6:30PM  
1239 E Main St. Bartow, FL 33830  
(2<sup>nd</sup> Floor) Register: 863-519-8900 x 289

### Domestic Violence Symposium

Date: Friday, October 13, 2023  
Time: 8AM – 5PM (lunch will be provided)  
Location: Warner University/Church of God in Lake Wales  
Registration Link: <https://www.surveymonkey.com/r/DVCommunity>

### Rudolph Round-Up Toy Drive

We're needing Rudolph Champions to help create special holiday memories for over 1,500 children in foster care. To learn more visit, [heartlandforchildren.org/rudolph](http://heartlandforchildren.org/rudolph)

### HFC's "Let's Talk About it" Podcast

where we provide education and resources for family matters in Polk, Highlands and Hardee Counties  
[Apple Podcasts](#) / [Anchor](#) / [Spotify](#) / [YouTube](#)

### TBRI Caregiver Training

by Houses of Hope at Redemption Church in Lakeland from 8:30am-3:30pm

- October 24-26
- November 14-16

Contact Danielle Stolk

## POLK COUNTY

### FREE Homecoming Dresses & Suits

October 14<sup>th</sup> & 21<sup>st</sup> from 11AM-4PM at Lakeland Square Mall – 3800 US 98 N Lakeland (Across from Rack Room Shoes) Call 863-802-0777.

### Free Trainings for Parents & Teachers

Early Learning Coalition of Polk County is hosting classes in multiple locations providing tools and resources and food. Space is limited. Register here: <https://bit.ly/3AJgNz3>

### Peer Recovery Center

Center for Behavioral Health Annex  
1501 1<sup>st</sup> Street South, Winter Haven, FL 33880  
Hours: Monday – Friday from 9AM-3PM  
The center is a place for adults with a mental health diagnosis to receive education, support, resources and socialization.  
Contact: (863) 293-1121 x 205789 for more info

### Florida Children Museum

400 Bonnet Springs Blvd.  
Lakeland, FL 33815  
Contact: (863) 687-3869  
<https://explorefcm.org>

### Carol Jenkin Barnett United Way Resource Center

Offers weekly classes for children from infants through age 5 where parents and children will learn and socialize as they participate in fun, stimulating, developmental activities. These classes are FREE and a great opportunity to meet other moms and caregivers.

- Breast Feeding Support Group
- Autism/ASD Support Group
- Child Development Classes
- Free Tax Prep
- Healthcare Navigator

Location: 400 Bonnet Springs Blvd. Lakeland, FL 33815  
<https://uwcf.org/resourcecenter/>

## HIGHLANDS COUNTY

### Hope for Highlands Community Outreach Event

Wednesday, October 18<sup>th</sup> from 9AM-12PM  
at University Center & Building B – Welcome Center at South Florida State College. To learn more visit, [championsforchildren.org](http://championsforchildren.org).

### Swimming Lessons at YMCA

<http://www.highlandsymca.org/aquatics.htm>

### Champion for Children

Provides child abuse and neglect prevention programs and early-intervention services to children and families in Highlands County.

Contact for more info about the documentary **RESILIENCE: The Biology of Stress and the Science of Hope** which talks about the connection between trauma and health.

Office: (863) 382-2905  
<https://www.championforchildren.org/>

### Children's Museum of the Highlands

Hands on Learning for Ages 1-12  
Cost: \$8/per person (ages 1+) for all day play.  
219 N Ridgewood Dr. Sebring, Florida  
(863) 451-5385 (contact museum for updated hours)

### Preservers of Life

Highlands County Community Nursing Organization  
This organization provides prevention healthcare and helps businesses and individuals integrate holistic health and wellness practices.

Kasey Pacheco, Community Nurse Collaborator  
[Kasey@preserversoflife.com](mailto:Kasey@preserversoflife.com) | (863) 420-5255

### FREE GED Prep & ESOL Classes

South Florida State College is offering free classes for adults in Highlands and Hardee Counties to improve adult literacy.  
Contact: Sari Crews  
863-784-7473 | [sari.crews@southflorida.edu](mailto:sari.crews@southflorida.edu)  
<https://www.southflorida.edu/future-students/general-educational-development-program-ged>

## HARDEE COUNTY

### Hardee County Swimming Resources

[Swim Lessons | Florida Department of Health in Hardee \(floridahealth.gov\)](#)

### Hardee Help Center

A Christ-centered community service organization bringing hope & healing to Hardee County families in difficult seasons of life.  
713 E Bay Street Wauchula, FL 33873  
Contact: [info@hardeehelpcenter.com](mailto:info@hardeehelpcenter.com) | 863-773-0034

### Visit Hardee

Website for upcoming events, community updates and resources: <https://www.visithardee.com/events>

### FREE GED Prep & ESOL Classes

South Florida State College is offering free classes for adults in Highlands and Hardee Counties to improve adult literacy.  
Contact: Sari Crews  
863-784-7473 | [sari.crews@southflorida.edu](mailto:sari.crews@southflorida.edu)  
<https://www.southflorida.edu/future-students/general-educational-development-program-ged>



For additional resources and county events, check out our most recent Parent's Corner Newsletter.